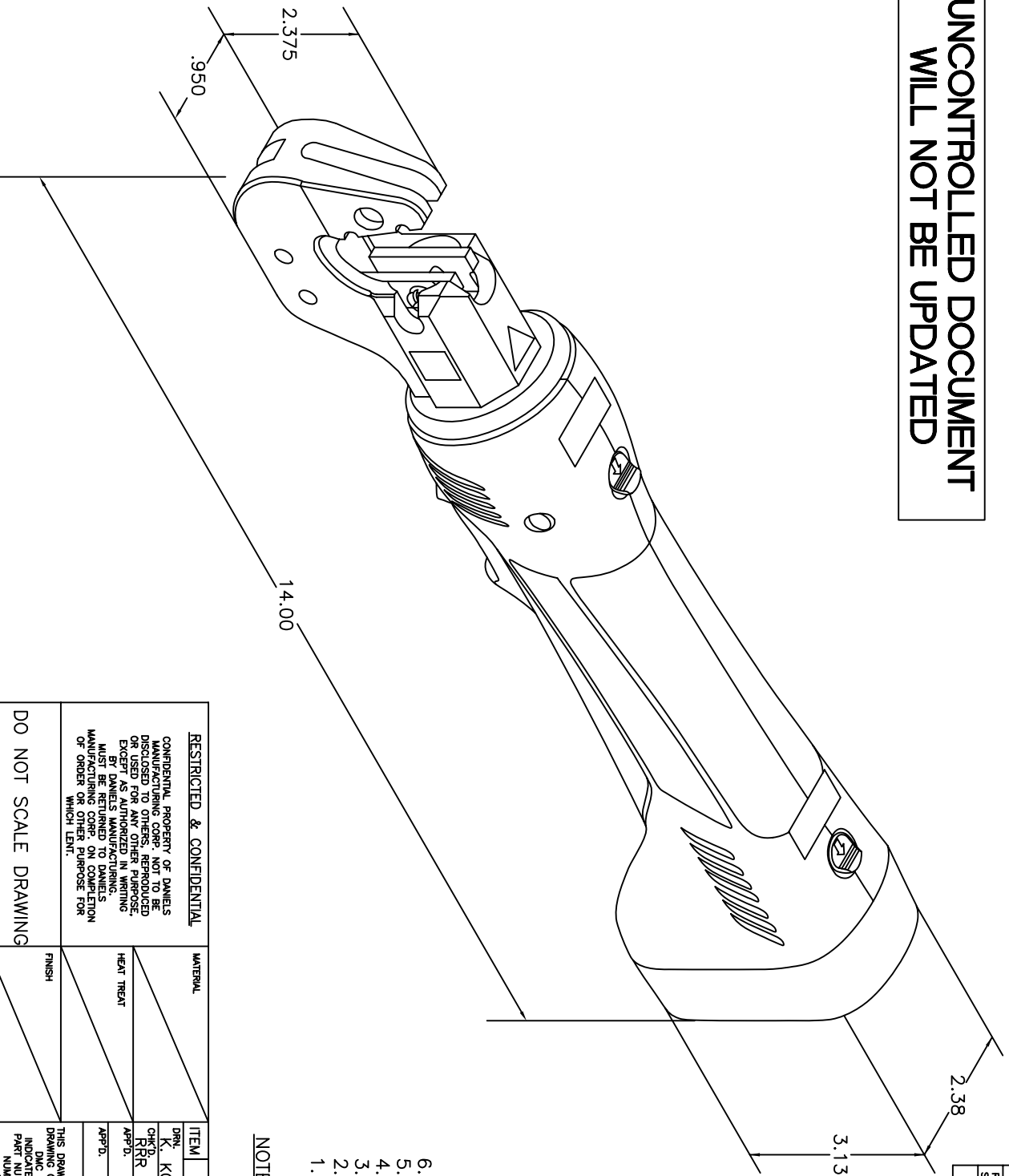


**UNCONTROLLED DOCUMENT
WILL NOT BE UPDATED**



REVISIONS				
REV. SYM.	E.C.O. NUMBER	DESCRIPTION	BY DATE	APP'D. DATE
1		ORIGINAL RELEASE	K. KOONS 2.13.06	RRR 2.13.06

- NOTES:
6. 360° ROTATING HEAD.
 5. CRIMP CYCLE TIME 2 SEC.
 4. ACCEPTS DMC DCT4 TYPE DIES.
 3. TOOL CRIMP FORCE 1.5 TONS.
 2. TOOL WEIGHT 2.8 lb.
 1. TOOL ENVELOPE 14" X 2.38" X 3.13" (L X W X H).

RESTRICTED & CONFIDENTIAL		CONFIDENTIAL PROPERTY OF DANIELS MANUFACTURING CORP. NOT TO BE REPRODUCED FOR ANY OTHER PURPOSE EXCEPT AS AUTHORIZED IN WRITING BY DANIELS MANUFACTURING. MUST BE RETURNED TO DANIELS MANUFACTURING CORP. ON COMPLETION OF ORDER OR OTHER PURPOSE FOR WHICH SENT.	
MATERIAL	FINISH	HEAT TREAT	
ITEM	PART NO.	DATE	
DRN. K. KOONS	2.13.06	DATE	
CHK'D. RRR	2.13.06	DATE	
APP'D.	DATE		
NOTE: THIS DRAWING IS AN OUTLINE DRAWING OF THE RESPECTIVE DMC PART NUMBER INDICATED. ACTUAL DMC PART NUMBER WITHOUT THE "-ENV" SUFFIX			
TITLE		WHERE USED:	
BATTERY POWERED HYDRAULIC CRIMP TOOL ENVELOPE DRAWING		DMC. NO. DC1E4-ENV	
QTY.		SHEET 1 OF 1	
DESCRIPTION/REMARKS		REV. 1	
DANIELS MANUFACTURING CORP. ORLANDO, FLORIDA CAGE 11851			
SCALE		DMC. NO. DC1E4-ENV	
SIZE NTS		SHEET 1 OF 1	
POSTING		REV. 1	
DO NOT SCALE DRAWING			