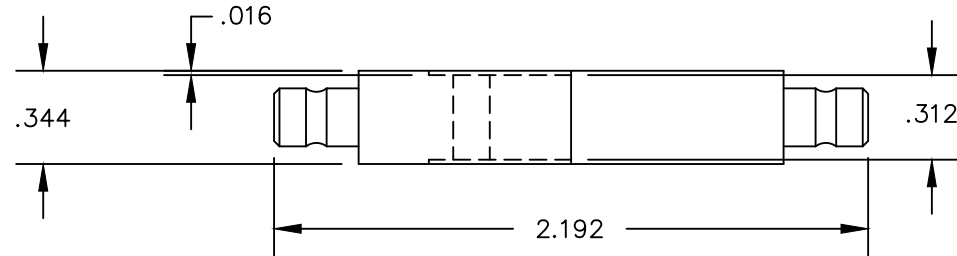
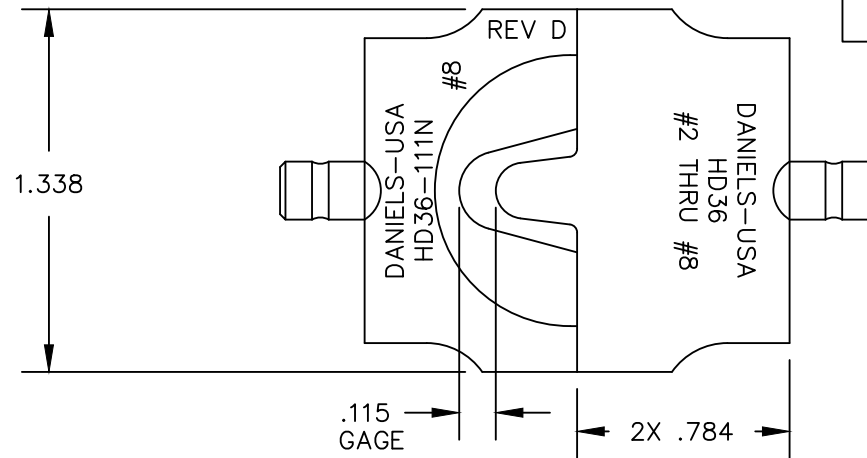



REVISIONS				
REV. SYM.	E.C.O. NUMBER	DESCRIPTION	BY DATE	APP'D DATE
D		UPDATED	ENF 5-31-11	DE 5-31-11



**UNCONTROLLED DOCUMENT  
WILL NOT BE UPDATED**



2. USE GAGE G1150 TO CHECK
1. USED FOR SIZE #8 AWG NON-INSULATED TERMINALS.

RESTRICTED & CONFIDENTIAL		MATERIAL	ITEM	PART NO.	QTY.	DESCRIPTION/REMARKS				
CONFIDENTIAL PROPERTY OF DANIELS MANUFACTURING CORP. NOT TO BE DISCLOSED TO OTHERS, REPRODUCED OR USED FOR ANY OTHER PURPOSE, EXCEPT AS AUTHORIZED IN WRITING BY DANIELS MANUFACTURING. MUST BE RETURNED TO DANIELS MANUFACTURING CORP. ON COMPLETION OF ORDER OR OTHER PURPOSE FOR WHICH LENT.		HEAT TREAT	DRN.	JMC	DATE 4-4-00	 DANIELS MANUFACTURING CORP. ORLANDO, FLORIDA CAGE 11851				
			CHK'D.	JWJ	DATE 4-4-00					
			APP'D.		DATE	TITLE	DIE SET ENVELOPE DRAWING			
			APP'D.		DATE	WHERE USED:				
DO NOT SCALE DRAWING		FINISH	NOTE:			SIZE	SCALE	CAD P/N	SHEET	OF
			THIS DRAWING IS AN OUTLINE DRAWING OF THE RESPECTIVE DMC PART NUMBER INDICATED. ACTUAL DMC PART NUMBER IS DRAWING NUMBER WITHOUT THE "-ENV" SUFFIX.			B	2X	HD36-111N-ENV	1	1
			POSTING		DWG. NO.		REV.			
					HD36-111N-ENV		D			