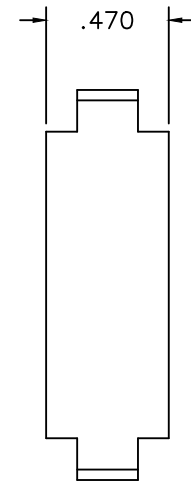


GAGE 0.126



REVISIONS				
REV. SYM.	E.C.O. NUMBER	DESCRIPTION	BY DATE	APP'D DATE
1		ORIGINAL RELEASE	JWJ 6/2/99	RRR 6/2/99
D		REVISED GAGING, ADDED REV LEVEL	ENF 5-16-11	DE 5-16-11

NOTES:

- 2. USE GAGE G1151 TO CHECK
- 1. USED FOR SIZE #6 AWG NON-INSULATED TERMINALS.

**UNCONTROLLED DOCUMENT
WILL NOT BE UPDATED**

RESTRICTED & CONFIDENTIAL CONFIDENTIAL PROPERTY OF DANIELS MANUFACTURING CORP. NOT TO BE DISCLOSED TO OTHERS, REPRODUCED OR USED FOR ANY OTHER PURPOSE, EXCEPT AS AUTHORIZED IN WRITING BY DANIELS MANUFACTURING. MUST BE RETURNED TO DANIELS MANUFACTURING CORP. ON COMPLETION OF ORDER OR OTHER PURPOSE FOR WHICH LENT.	MATERIAL	ITEM		PART NO.		QTY.	DESCRIPTION/REMARKS		
	HEAT TREAT	DRN.	J. JOYCE		DATE	6/2/99		DANIELS MANUFACTURING CORP. ORLANDO, FLORIDA CAGE 11851	
		CHK'D.	RRR		DATE	6/2/99			
	FINISH	APP'D.			DATE				
APP'D.				DATE					
DO NOT SCALE DRAWING		NOTE: THIS DRAWING IS AN OUTLINE DRAWING OF THE RESPECTIVE DMC PART NUMBER INDICATED. ACTUAL DMC PART NUMBER IS DRAWING NUMBER WITHOUT THE "-ENV" SUFFIX.						TITLE DIE SET ENVELOPE DRAWING	
		WHERE USED:		SIZE	SCALE	CAD P/N	SHEET	OF	
				B	2X	HD51-115N-ENV	1	1	
				POSTING	DWG. NO.		REV.		
					HD51-115N-ENV		D		