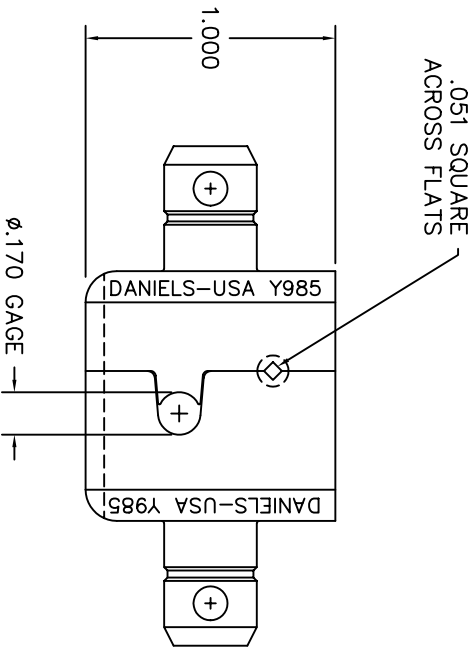
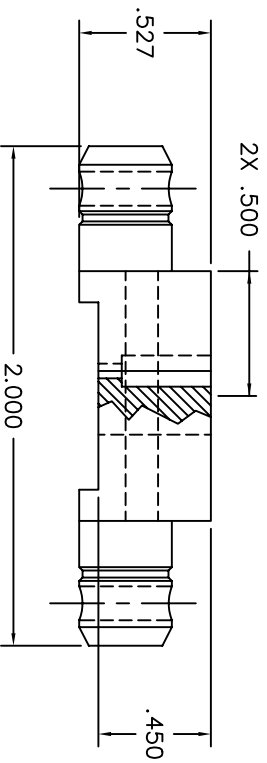


REVISIONS				
REV. NUMBER	E.C.O. NUMBER	DESCRIPTION	BY DATE	APP'D. DATE
1		ORIGINAL RELEASE	JML 6/5/03	RRR 6/5/03



**UNCONTROLLED DOCUMENT
WILL NOT BE UPDATED**

1. FUNCTIONAL EQUIVALENT TO AMP 69477-2.
NOTES:

RESTRICTED & CONFIDENTIAL CONFIDENTIAL PROPERTY OF DANIELS MANUFACTURING CORP. NOT TO BE DISCLOSED TO OTHERS, REPRODUCED OR USED FOR ANY OTHER PURPOSE, EXCEPT AS AUTHORIZED IN WRITING BY DANIELS MANUFACTURING. THIS DRAWING IS THE PROPERTY OF DANIELS MANUFACTURING CORP. AND IS LOANED TO YOU FOR THE PURPOSE OF ORDER OR OTHER PURPOSE FOR WHICH LENT.		MATERIAL		ITEM		PART NO.		DESCRIPTION/REMARKS	
HEAT TREAT		FINISH		DRW. J. JOYCE CHK'D. RRR APP'D.		DATE 6/5/03 DATE 6/5/03 DATE		DANIELS MANUFACTURING CORP. ORLANDO, FLORIDA GAGE 11691	
DO NOT SCALE DRAWING		NOTE: THIS DRAWING IS AN OUTLINE DRAWING OF THE RESPECTIVE DIM PART NUMBER INDICATED ON THE DIMG PART NUMBER WITHOUT THE "-ENV" SUFFIX.		QTY.		WHERE USED:		SHEET 1 OF 1	
				TITLE		SCALE		REV. 1	
				DIE SET ENVELOPE DRAWING		2X			
				CAD P/N		DWC NO.			
				Y985-ENV		Y985-ENV			